



Certificate of Analysis

QA SAMPLE - INFORMATIONAL ONLY

1 of 3

ICAL ID: 20220819-060
Sample: CA220819-020-059
Purple Punch
Strain: Purple Punch
Category: Concentrates & Extracts

Terplandia
Lic. #
None
San Diego, CA 92121
Lic. #

Batch#:
Batch Size Collected:
Total Batch Size:
Collected: 08/22/2022; Received: 08/22/2022
Completed: 08/22/2022

Moisture NT Water Activity NT	Total THC NT	Total CBD NT	Total Cannabinoids NT	Total Terpenes 785.423 mg/g
--	-----------------	-----------------	--------------------------	--------------------------------

Summary	SOP Used	Date Tested	
Batch	TERP-PREP-001	08/22/2022	Complete
Terpenes			Complete



Scan to see results

Cannabinoid Profile

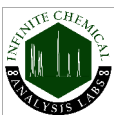
Analyte	LOQ (mg/g)	LOD (mg/g)	%	mg/g	Analyte	LOQ (mg/g)	LOD (mg/g)	%	mg/g
---------	------------	------------	---	------	---------	------------	------------	---	------

Total THC=THCa * 0.877 + d9-THC; Total CBD = CBDa * 0.877 + CBD. LOD= Limit of Detection, LOQ= Limit of Quantitation, ND= Not Detected, NR= Not Reported. Potency is reported on a dry weight basis. Instrumentation and analysis SOPs used: Cannabinoids:UHPLC-DAD(POT-INST-005),Moisture:Moisture Analyzer(MOISTURE-001),Water Activity:Water Activity Meter(WA-INST-002), Foreign Material:Microscope(FOREIGN-001). Density measured at 19-24 °C, Water Activity measured at 0-90% RH. All QA submitted by the client, All CA State Compliance sampled using SAMPL-SOP-001.

Terpene Profile

Analyte	LOQ (mg/g)	LOD (mg/g)	%	mg/g	Analyte	LOQ (mg/g)	LOD (mg/g)	%	mg/g
Terpinolene	0.154	0.014	28.3028	283.028	Citronellol	0.598	0.138	0.1263	1.263
β-Caryophyllene	0.684	0.228	15.2193	152.193	Camphene	0.151	0.009	0.1100	1.100
β-Myrcene	0.153	0.017	14.9832	149.832	Fenchone	0.151	0.010	0.0951	0.951
δ-Limonene	0.306	0.053	6.6523	66.523	α-Bisabolol	0.162	0.054	0.0290	0.290
α-Humulene	0.151	0.032	4.4368	44.368	α-Cedrene	0.151	0.029	ND	ND
Linalool	0.154	0.030	1.9875	19.875	β-Eudesmol	0.192	0.064	ND	ND
β-Pinene	0.306	0.020	1.7402	17.402	Camphor	0.371	0.124	ND	ND
α-Pinene	0.151	0.028	1.0700	10.700	Cedrol	0.151	0.039	ND	ND
Fenchol	0.152	0.029	0.7868	7.868	cis-Nerolidol	0.264	0.088	ND	ND
α-Terpineol	0.154	0.049	0.7408	7.408	Geraniol	0.609	0.138	ND	ND
γ-Terpinene	0.152	0.033	0.5042	5.042	Geranyl Acetate	0.151	0.020	ND	ND
α-Terpinene	0.151	0.045	0.4238	4.238	Isoborneol	0.151	0.022	ND	ND
δ-3-Carene	0.306	0.030	0.3600	3.600	Menthol	0.170	0.057	ND	ND
Caryophyllene Oxide	0.602	0.129	0.3541	3.541	(-)-Guaiaol	0.154	0.033	ND	ND
Eucalyptol	0.221	0.074	0.2944	2.944	Pulegone	0.178	0.059	ND	ND
p-Cymene	1.068	0.356	0.1888	1.888	trans-Nerolidol	0.230	0.077	ND	ND
Borneol	0.154	0.027	0.1369	1.369	Total			78.5423	785.423

NR= Not Reported (no analysis was performed), ND= Not Detected (the concentration is less than the Limit of Detection (LOD)). Analytical instrumentation used: HS-GC-MS; samples analyzed according to SOP TERP-INST-003.



Infinite Chemical Analysis Labs
8312 Miramar Mall
San Diego, CA
(858) 623-2740
www.infiniteCAL.com
Lic# C8-000047-LIC

Josh M Swider

Josh Swider
Lab Director, Managing Partner
08/22/2022

Confident Cannabis
All Rights Reserved
support@confidentcannabis.com
(866) 506-5866
www.confidentcannabis.com



This product has been tested by Infinite Chemical Analysis, LLC using valid testing methodologies and a quality system as required by state law. All LQC samples were performed and met the prescribed acceptance criteria in 16 CCR section 15730, pursuant to 16 CCR section 15726(e)(13). Values reported relate only to the product tested. Infinite Chemical Analysis, LLC makes no claims as to the efficacy, safety or other risks associated with any detected or non-detected levels of any compounds reported herein. This Certificate shall not be reproduced except in full, without the written approval of Infinite Chemical Analysis, LLC.



Certificate of Analysis

QA SAMPLE - INFORMATIONAL ONLY

2 of 3

ICAL ID: 20220819-060
Sample: CA220819-020-059
Purple Punch
Strain: Purple Punch
Category: Concentrates & Extracts

Terplandia
Lic. #
None
San Diego, CA 92121

Lic. #

Batch#:
Batch Size Collected:
Total Batch Size:
Collected: 08/22/2022; Received: 08/22/2022
Completed: 08/22/2022

Residual Solvent Analysis

Category 1	LOQ	LOD	Limit	Status	Category 2	LOQ	LOD	Limit	Status	Category 2	LOQ	LOD	Limit	Status
------------	-----	-----	-------	--------	------------	-----	-----	-------	--------	------------	-----	-----	-------	--------

NR= Not Reported (no analysis was performed), ND= Not Detected (the concentration is less then the Limit of Detection (LOD)). Analytical instrumentation used: HS-GC-MS; samples analyzed according to SOP RS-INST-003.

Heavy Metal Screening

	LOQ	LOD	Limit	Status
--	-----	-----	-------	--------

NR= Not Reported (no analysis was performed), ND= Not Detected (the concentration is less then the Limit of Detection (LOD)). Analytical instrumentation used: ICP-MS; samples analyzed according to SOP HM-INST-003.

Microbiological Screening

	Limit	Result	Status
--	-------	--------	--------

ND=Not Detected. Analytical instrumentation used:qPCR; samples analyzed according to SOP MICRO-INST-001.



Infinite Chemical Analysis Labs
8312 Miramar Mall
San Diego, CA
(858) 623-2740
www.infiniteCAL.com
Lic# C8-000047-LIC

Josh M Swider

Josh Swider
Lab Director, Managing Partner
08/22/2022

Confident Cannabis
All Rights Reserved
support@confidentcannabis.com
(866) 506-5866
www.confidentcannabis.com



This product has been tested by Infinite Chemical Analysis, LLC using valid testing methodologies and a quality system as required by state law. All LQC samples were performed and met the prescribed acceptance criteria in 16 CCR section 15730, pursuant to 16 CCR section 15726(e)(13). Values reported relate only to the product tested. Infinite Chemical Analysis, LLC makes no claims as to the efficacy, safety or other risks associated with any detected or non-detected levels of any compounds reported herein. This Certificate shall not be reproduced except in full, without the written approval of Infinite Chemical Analysis, LLC.



Certificate of Analysis

QA SAMPLE - INFORMATIONAL ONLY

3 of 3

ICAL ID: 20220819-060
Sample: CA220819-020-059
Purple Punch
Strain: Purple Punch
Category: Concentrates & Extracts

Terplandia
Lic. #
None
San Diego, CA 92121

Lic. #

Batch#:
Batch Size Collected:
Total Batch Size:
Collected: 08/22/2022; Received: 08/22/2022
Completed: 08/22/2022

Chemical Residue Screening

Category 1	LOQ	LOD	Status	Mycotoxins	LOQ	LOD	Limit	Status
------------	-----	-----	--------	------------	-----	-----	-------	--------

Category 2	LOQ	LOD	Limit	Status	Category 2	LOQ	LOD	Limit	Status
------------	-----	-----	-------	--------	------------	-----	-----	-------	--------

Other Analyte(s):

NR= Not Reported (no analysis was performed), ND= Not Detected (the concentration is less then the Limit of Detection (LOD)). Analytical instrumentation used: LC-MS-MS & GC-MS-MS; samples analyzed according to SOPs PESTMYCO-LC-INST-004 and PEST-GC-INST-003.



Infinite Chemical Analysis Labs
8312 Miramar Mall
San Diego, CA
(858) 623-2740
www.infiniteCAL.com
Lic# C8-0000047-LIC

Josh M Swider

Josh Swider
Lab Director, Managing Partner
08/22/2022

Confident Cannabis
All Rights Reserved
support@confidentcannabis.com
(866) 506-5866
www.confidentcannabis.com



This product has been tested by Infinite Chemical Analysis, LLC using valid testing methodologies and a quality system as required by state law. All LQC samples were performed and met the prescribed acceptance criteria in 16 CCR section 15730, pursuant to 16 CCR section 15726(e)(13). Values reported relate only to the product tested. Infinite Chemical Analysis, LLC makes no claims as to the efficacy, safety or other risks associated with any detected or non-detected levels of any compounds reported herein. This Certificate shall not be reproduced except in full, without the written approval of Infinite Chemical Analysis, LLC.